



The National Union of Healthcare Workers presents

# PLANNING FOR THE NEXT PANDEMIC: APPROACHES TO SAFEGUARD HEALTHCARE WORKERS AND PATIENTS

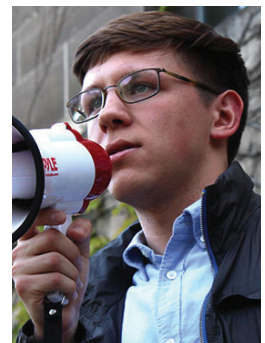
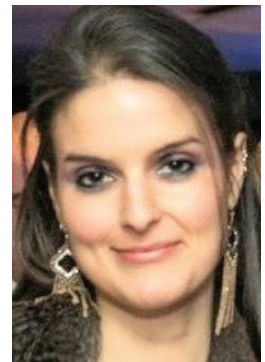
*a free Continuing Education Course for NUHW members*

**Online CE course - Free for NUHW members**  
**Learn more and log on at [www.nuhw.org/ce](http://www.nuhw.org/ce)**

**Two (2) Credits/Contact Hours.**

Target Audience:

- Audiologist
- Certified Respiratory Therapist
- Licensed Clinical Social Worker
- Licensed Marriage and Family Therapist
- Licensed Professional Clinical Counselor
- Licensed Vocational Nurse
- Occupational Therapist
- Pharmacist
- Psychiatric Technician
- Psychologist
- Registered Dietitian Nutritionist or Nutrition and Dietetics Technician
- Registered Nurse
- Registered Respiratory Therapist
- Respiratory Care Practitioner
- Speech Pathologist



Course Content and Instructional Method: The COVID-19 pandemic has taught the healthcare industry what we need to prepare for future healthcare crises. Healthcare workers have taken action to transform their workplaces and the healthcare system as a whole in order to protect patients and provide proper health treatment throughout the pandemic. This course will look back on progress made in recent years to cope with crisis and participants will explore what they can do to improve our planning for pandemic safety. Instructional Methods: Lecture, Demonstration, Large Group Question and Answer, Small Group Discussion Breakout

Instructors:

Jessica Early, NP, is a graduate of the Yale University School of Nursing. She currently serves as NUHW's Patient Advocacy Coordinator, doing work to organize patients and provide occupational health and safety support to NUHW members.

Tyler Kissinger, BA is currently a coordinator with the National Union of Healthcare workers. He previously served as an organizer for the American Federation of Teachers and as a lead contract negotiator for the Chicago News Guild.

Kevin Riley, PHD, MPH is currently the director at UCLA Labor Occupational Safety and Health Program. He is the author of many articles covering topics on work injuries, health and safety regulations and worker involvement.

Course Objectives:

- Perform two patient care skills that will help slow pathogen spread in any healthcare setting.
- Learn about the role of healthcare workers as advocates for better workplace and patient safety procedures
- Implement two new procedures that will protect healthcare workers and patients from infection during normal operations and during public health emergencies.

Course Schedule:

- I. What We've Learned (10-10:30am)
- II. What Healthcare Workers Should Know to Prepare Themselves (10:30 - 11am)
- III. Case Study (11 - 11:30am)
- IV. Q&A (11:30am - 12pm)

Certificates of Completion can be downloaded immediately after the class..

This live activity has no commercial support. The instructors and the program have no conflicts of interest.

Approvals:

- BRN: Provider approved by the California Board of Registered Nursing, Provider Number 16983, for 2 contact hours.
- CAMFT: Provider approved by CAMFT, Approval Number 143091. Course meets the qualifications for 2 hours of continuing education credit for LMFTs, LCSWs, LPCCs, and/or LEPs as required by the California Board of Behavioral Sciences. NUHW is approved by the California Association of Marriage and Family Therapists to sponsor continuing education for LMFTs, LCSWs, LPCCs, and/or LEPs. NUHW maintains responsibility for this program/course and its content.
- CDR: Approved by Commission on Dietetic Registration (CDR) the credentialing agency for the Academy of Nutrition and Dietetics.
- CPA: NUHW is approved by the California Psychological Association to provide continuing professional education for psychologists. NUHW maintains responsibility for this program and its content.

Refund Policy: Continuing education activities are provided free of charge to NUHW members. Notice of cancellation is appreciated but not required. For those who do pay for the course, the following refund/cancellation policy applies. For live activities, registered participants who cancel more than 14 days in advance of the event will receive a full refund in 3-5 business days. No other refunds will be given. Requests for refunds must be made via email to [ceadministrator@nuhw.org](mailto:ceadministrator@nuhw.org). For online courses, no refunds will be given. Online courses must be completed within one year of the original purchase date. After one year, access to the course may be removed and no refund will be given. If NUHW cancels an activity, registrants will be contacted by email and a full refund of any fees paid will be offered.

ADA Statement: Facilities and programs are accessible to persons with disabilities. If you have a special need and plan to attend the workshop, please contact [ceadministrator@nuhw.org](mailto:ceadministrator@nuhw.org) with as much advance notice as is possible.

Grievance Policy: Any complaints can be addressed to [ceadministrator@nuhw.org](mailto:ceadministrator@nuhw.org). The Continuing Education Program grievance policies and procedures will be made available upon request.