

# STAND WITH US!

**Lakewood Regional Medical Center** makes \$18 million a year by outsourcing our jobs to subcontractors that pay poverty wages.

Lakewood Regional subcontracts housekeepers and cafeteria workers to Sodexo, which makes \$1 billion a year by paying us just pennies above minimum wage.

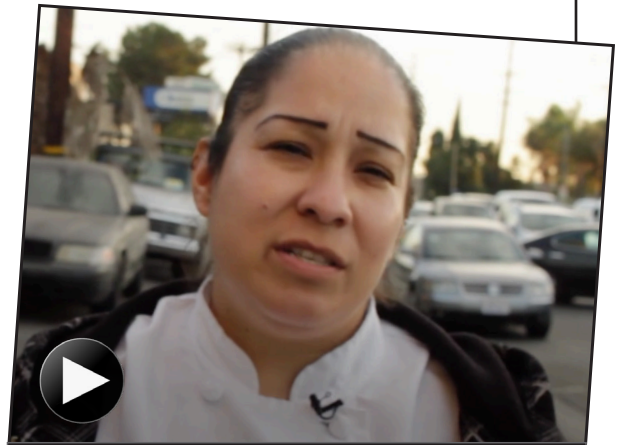
**Wages are so low that many full-time workers — some of us the sole support for our families — need to collect and recycle cans to pay for basic necessities.**

Despite working 40 hours or more a week cleaning and disinfecting the hospital and providing meals for patients and their families, many of us cannot afford the hospital's health insurance for our families, and qualify for public assistance programs like Medi-Cal and Food Stamps.

**Sodexo's low wages, high turnover, and chronic short staffing are also undermining Lakewood Regional's infection-control standards.**

Understaffing prevents us from cleaning the hospital in accordance with its own standards. This year, the Leapfrog Group — a national nonprofit hospital-safety organization — gave the hospital a "C" for patient safety. Lakewood scored **three times worse than average** for life-threatening MRSA infections. **(For more info, see reverse.)**

## WE DEMAND BETTER WAGES AND BENEFITS AND INCREASED STAFFING.



**VIDEO: SODEXO WORKERS  
SHARE OUR STORIES**

Check it out at [NUHW.org/sodexopoverty](http://NUHW.org/sodexopoverty)

### HOW YOU CAN HELP

Tell Sodexo and Lakewood Regional: Now is the time to end poverty wages!

Sodexo Vice President  
Sean Knight  
(916) 273-7791 or  
[sean.knight@sodexo.com](mailto:sean.knight@sodexo.com)

Lakewood Regional CEO  
John Grah  
(562) 602-6751  
[john.grah@tenethealth.com](mailto:john.grah@tenethealth.com)

**NUHW** NATIONAL UNION OF  
HEALTHCARE WORKERS

# THE FACTS ABOUT LRMCM

**77%**

of staff report being understaffed at least once a week

**57%**

staff report working without pay in order to complete assignments

**43%**

of infection-control staff report having to take shortcuts to complete duties on time

**3X**

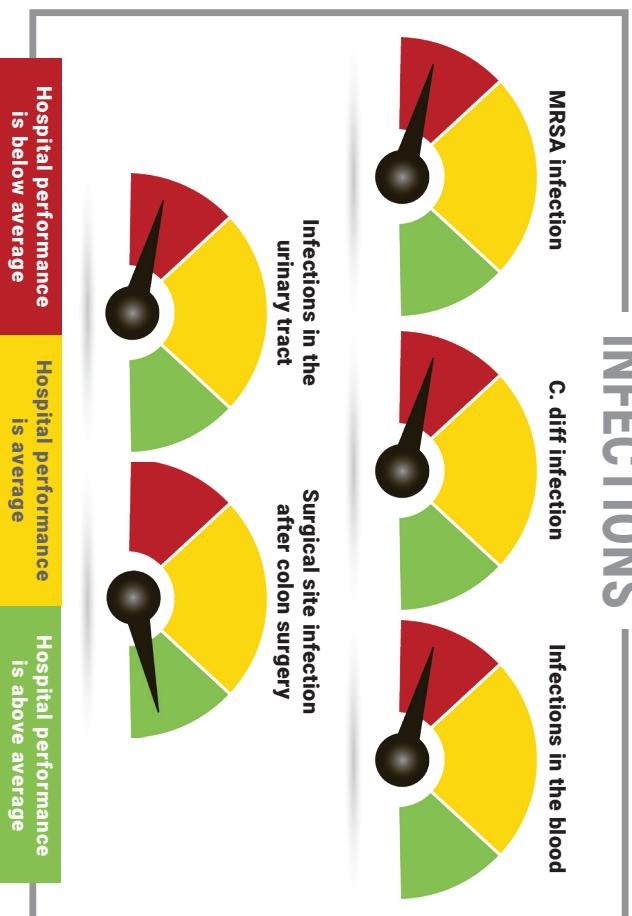
LRMC scored three times worse than the average hospital for MRSA infections

# LAKEMOOD REGIONAL MEDICAL CENTER

## PUTTING PATIENTS AT RISK?

Lakewood Regional averages **\$18 MILLION** in annual profit. Meanwhile, the hospital is experiencing high levels of infection while understaffing its infection-control programs.

### INFECTIONS



According to the Leapfrog Group, a national nonprofit hospital-safety organization that collects data from more than 1,800 hospitals.

LEAPFROG  
**HOSPITAL**  
SAFETY GRADE

St. Jude  
Medical  
Center

**A**

Whittier  
Hospital  
Medical Center

**A**

La Palma  
Intercommunity  
Hospital

**A**

Lakewood  
Regional  
Medical Center

**C**

**NUHW**

NATIONAL UNION OF  
HEALTHCARE WORKERS

NUHW.org healthcarerworkers NUHW healthcarerworkers