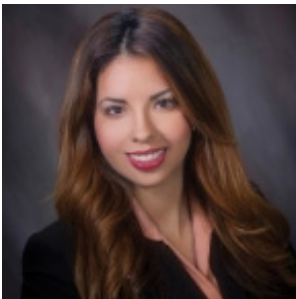


LET'S MAKE OUR UNION STRONGER

Because government regulates healthcare, we as healthcare workers must participate in our democracy.

The best mechanism we have to ensure that elected leaders will support our fight for fair contracts and good patient care is to contribute to our Committee On Political Education fund.

Through COPE, we help our political allies win office, and they help us advocate for our patients and each other.



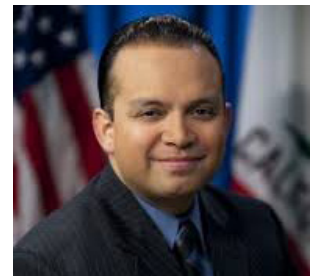
Our volunteer work and COPE contributions helped elect Carmen Gil and Carissa Purnell to the Salinas Valley Memorial Healthcare System Board of Directors.

They have been strong advocates for protecting our jobs here at the hospital and we must elect more allies to have a stronger voice on the board.



We also helped elect Luis Alejo – first to the State Assembly and currently to the Monterey County Board of Supervisors, which he now chairs.

Luis was a staunch supporter of our strike that resulted in a contract that won us strong raises and a prohibition against management subcontracting out our jobs.



Now we can finally have a pro-worker representative in the State Senate by helping elect Anna Caballero.

Anna has been an ally of ours in the State Assembly, and her election to the Senate would mean that we can count on both our state representatives to support us in our next contract campaign.

**If we all chip in a few dollars per month,
we can make a lot of change!**



NATIONAL UNION OF
HEALTHCARE WORKERS

*For more information, contact NUHW Organizer
Grant Hill at (831) 521-8493 or ghill@nuhw.org*



NATIONAL UNION OF HEALTHCARE WORKERS

NUHW COPE AUTHORIZATION VOLUNTARY CAMPAIGN CONTRIBUTIONS

Your voice can impact the political decisions affecting the funding and delivery of healthcare in our community. Sign up for COPE today!

Please print clearly

First Name M.I. Last Name

Street Address Apt. No.

City Zip

Home Phone Cell Phone Social Security Number (Last 4 Digits)

Employer/Facility

In order to build political power for healthcare workers to win on issues and elect candidates who advance workers' rights and affordable, quality healthcare for all, I hereby authorize and direct my employer to deduct from my paycheck the following sum and remit that amount to NUHW COPE.

Please deduct monthly from my paycheck the amount of:

\$5 \$10 \$15 \$20 \$ per month.

I understand that this deduction is not tax-deductible and that this contribution is strictly voluntary and will be used for political purposes.

The signing of this authorization form and the making of these voluntary contributions are not conditions of membership in NUHW nor of my employment. My Union will not favor or disadvantage anyone by reason of the amount of their contribution or decision not to contribute. I may refuse to contribute without reprisal. My payroll deduction will continue until I notify NUHW in writing of any change. The submission of a new deduction authorization form will supersede any previous authorizations for this payroll deduction. I have the right to terminate this deduction at any time by providing written notification (or email) to NUHW.

Federal campaign law requires political committees to report the following information for individuals whose contributions are more than \$200 per year: name, address, occupation and employer. All information will be kept confidential unless disclosure is required by law. You must be a member of NUHW or on its administrative/executive staff to make a contribution. You must be a U.S. Citizen or a person lawfully admitted for permanent residence in the United States in order to contribute. Contributions to NUHW COPE may not exceed \$5,000 per calendar year, per contributor.

Signature Date

Fax completed form to: 510-834-2018; or Email completed form to: info@nuhw.org; or Mail completed form to: NUHW, 5801 Christie Ave, Ste 525, Emeryville, CA 94608